



CorePro LED PLC 2P

LED PLC 5.9W 830 2P G24d-1

CorePro LED PLC 2P integrates a LED light source into a traditional fluorescent form factor. This product is the ideal solution for uplampping in general lighting applications: it meets basic lighting requirements, offers significant energy savings, and is environmentally friendly.

Product data

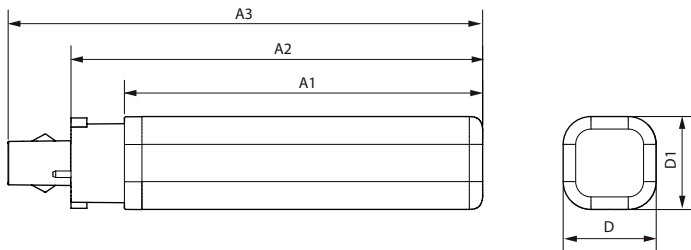
General Information		Starting Time (Nom)	
Cap-Base	G24d-1		0.5 s
Nominal lifetime	30,000 hour(s)	Warm-up time to 60% light	0.5 s
Switching Cycle	50,000	Power Factor (Fraction)	0.9
Lighting Technology	LED	Voltage (Nom)	220-240 V
Light Technical		Temperature	
Color Code	830 [CCT of 3000K]	Ambient temperature range	-20 to +35 °C
Beam Angle (Nom)	120 degree(s)	T-Case Maximum (Nom)	75 °C
Luminous Flux	600 lm	Controls and Dimming	
Luminous Efficacy (rated) (Nom)	101 lm/W	Dimmable	No
Color Designation	White (WH)	Mechanical and Housing	
Correlated Color Temperature (Nom)	3000 K	Bulb Finish	Frosted
Color Consistency	<6	Bulb Material	Plastic
Color rendering index (CRI)	82	Product Length	100 mm
LLMF At End Of Nominal Lifetime (Nom)	70 %	Bulb Shape	PL-C
Photobiological safety according to EN 62471	RG1	Approval and Application	
Operating and Electrical		Energy Saving Product	Yes
Input Frequency	50 to 60 Hz	Approval Marks	RoHS compliance CE marking KEMA Keur certificate
Power Consumption	5.9 W	CE mark	Yes
Lamp Current (Nom)	31 mA		
Wattage Equivalent	13 W		

CorePro LED PLC 2P

EU RoHS compliant	Yes
Product Data	
Order product name	LED PLC 5.9W 830 2P G24d-1
Full product name	LED PLC 5.9W 830 2P G24d-1
Full product code	872016929640400
Order code	929003757008
Material Nr. (12NC)	929003757008

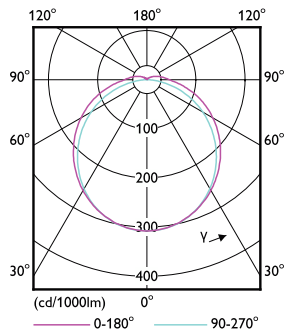
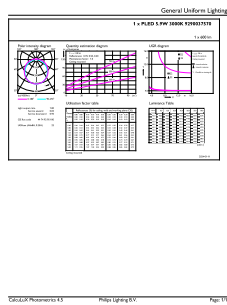
Numerator - Quantity Per Pack	1
Net Weight (Piece)	0.070 kg
EAN/UPC - Product/Case	8720169296404
Numerator - Packs per outer box	10
EAN/UPC - Case	8720169296411

Dimensional drawing



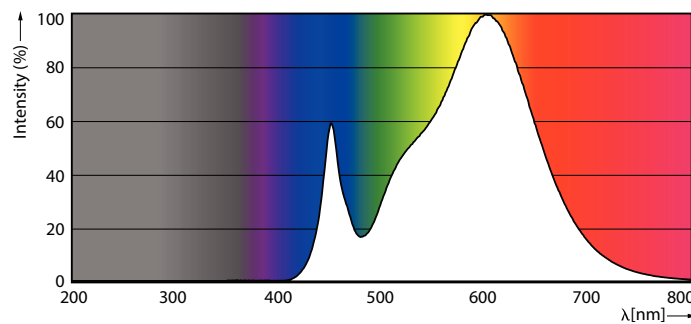
Product	D1	D	A1	A2	A3
LED PLC 5.9W 830 2P G24d-1	34 mm	34 mm	95 mm	115 mm	138 mm

Photometric data



General uniform lighting - LED PLC 5.9W 830 2P G24d-1

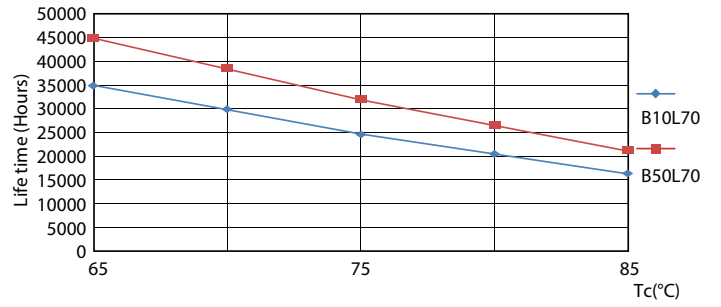
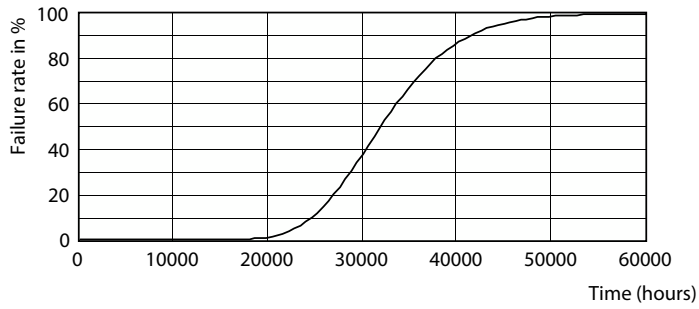
Light Distribution Diagram - LED PLC 5.9W 830 2P G24d-1



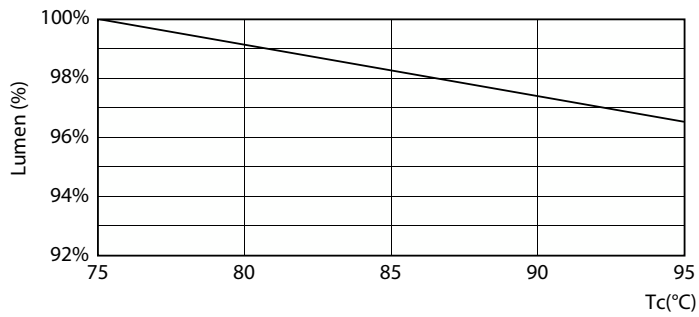
Spectral Power Distribution Colour - LED PLC 5.9W 830 2P G24d-1

CorePro LED PLC 2P

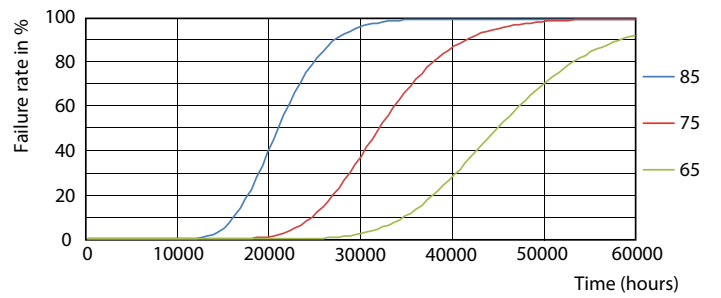
Lifetime



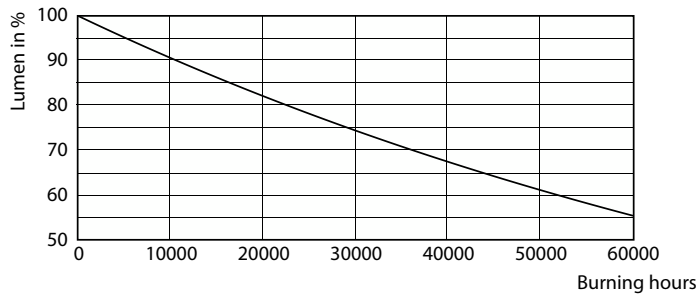
Life Expectancy Diagram



LifetimeVsTc



Lumen Maintenance Diagram - LED PLC 5.9W 830 2P G24d-1



FailureRate

Lumen Maintenance Diagram - LED PLC 5.9W 830 2P G24d-1

CorePro LED PLC 2P

