



CorePro LED PLC 2P

LED PLC 6.9W 830 2P G24d-2

CorePro LED PLC 2P integrates a LED light source into a traditional fluorescent form factor. This product is the ideal solution for uplampping in general lighting applications: it meets basic lighting requirements, offers significant energy savings, and is environmentally friendly.

Product data

General Information	
Cap-Base	G24d-2
Nominal lifetime	30,000 hour(s)
Switching Cycle	50,000
Lighting Technology	LED
Light Technical	
Color Code	830 [CCT of 3000K]
Beam Angle (Nom)	120 degree(s)
Luminous Flux	700 lm
Luminous Efficacy (rated) (Nom)	101 lm/W
Color Designation	White (WH)
Correlated Color Temperature (Nom)	3000 K
Color Consistency	<6
Color rendering index (CRI)	82
LLMF At End Of Nominal Lifetime (Nom)	70 %
Photobiological safety according to EN 62471	RG1
Operating and Electrical	
Input Frequency	50 to 60 Hz
Power Consumption	6.9 W
Lamp Current (Nom)	38 mA
Wattage Equivalent	18 W

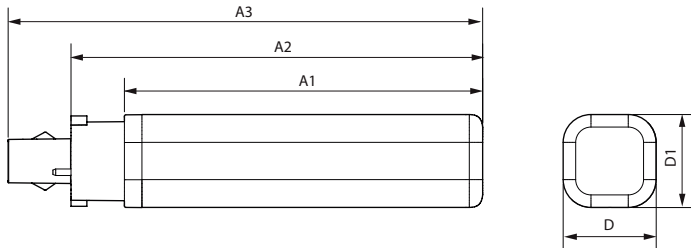
Starting Time (Nom)	0.5 s
Warm-up time to 60% light	0.5 s
Power Factor (Fraction)	0.9
Voltage (Nom)	220-240 V
Temperature	
Ambient temperature range	-20 to +35 °C
T-Case Maximum (Nom)	75 °C
Controls and Dimming	
Dimmable	No
Mechanical and Housing	
Bulb Finish	Frosted
Bulb Material	Plastic
Product Length	100 mm
Bulb Shape	PL-C
Approval and Application	
Energy Saving Product	Yes
Approval Marks	RoHS compliance CE marking KEMA Keur certificate
CE mark	Yes

CorePro LED PLC 2P

EU RoHS compliant	Yes
Product Data	
Order product name	LED PLC 6.9W 830 2P G24d-2
Full product name	LED PLC 6.9W 830 2P G24d-2
Full product code	872016929642800
Order code	929003757208
Material Nr. (12NC)	929003757208

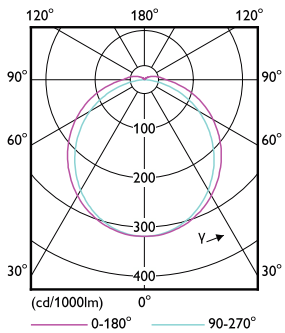
Numerator - Quantity Per Pack	1
Net Weight (Piece)	0.075 kg
EAN/UPC - Product/Case	8720169296428
Numerator - Packs per outer box	10
EAN/UPC - Case	8720169296435

Dimensional drawing

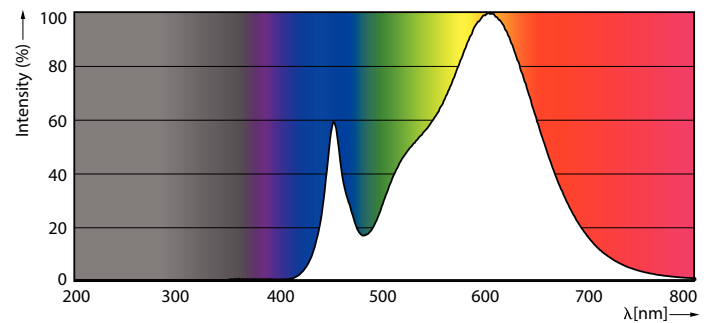


Product	D1	D	A1	A2	A3
LED PLC 6.9W 830 2P G24d-2	34 mm	34 mm	106 mm	125 mm	148 mm

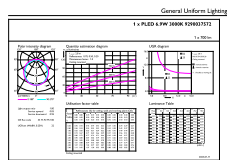
Photometric data



Light Distribution Diagram - LED PLC 6.9W 830 2P G24d-2



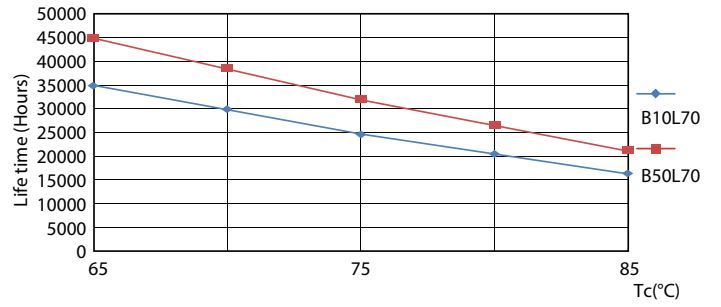
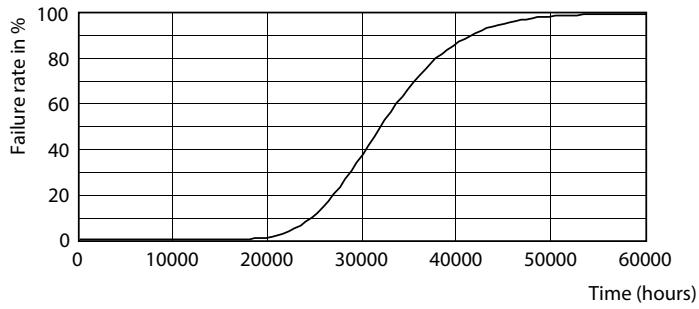
Spectral Power Distribution Colour - LED PLC 6.9W 830 2P G24d-2



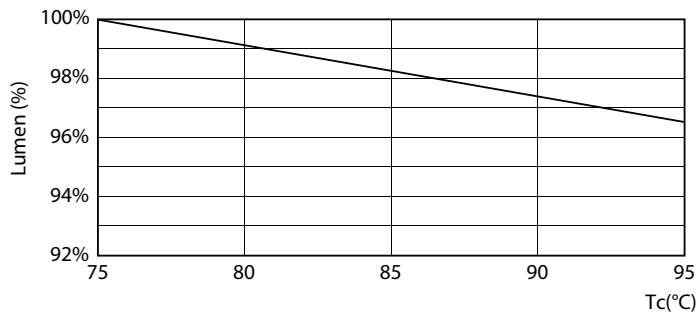
General uniform lighting - LED PLC 6.9W 830 2P G24d-2

CorePro LED PLC 2P

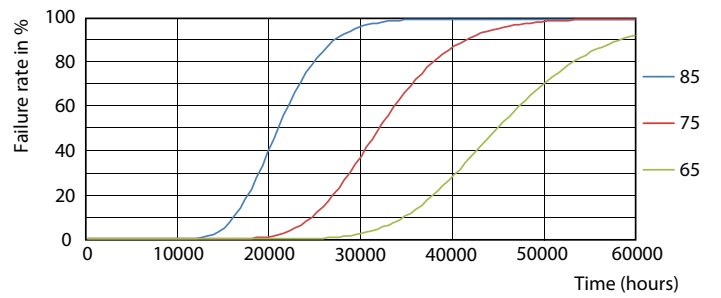
Lifetime



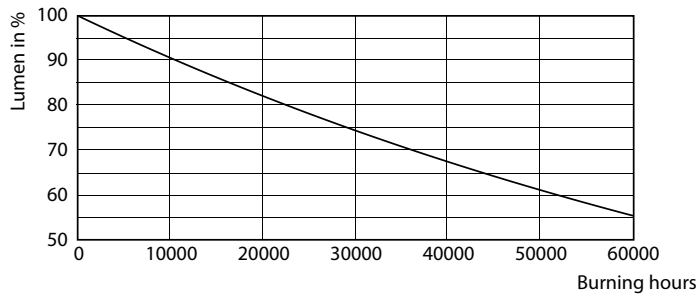
Life Expectancy Diagram



LifetimeVsTc



Lumen Maintenance Diagram - LED PLC 6.9W 830 2P G24d-2



FailureRate

Lumen Maintenance Diagram - LED PLC 6.9W 830 2P G24d-2

CorePro LED PLC 2P

