



CorePro LED PLC 2P



CorePro LED PLC 6.9W 840 2P G24d-2

The CorePro LED PLC 2P integrates a LED light source into a traditional fluorescent form factor. This product is the ideal solution for uplamping in general lighting applications: it meets basic lighting requirements, offers significant energy savings and is environmentally friendly.

Product data

General Information	
Cap base	G24d-2
Nominal lifetime	30,000 h
Switching Cycle	50,000
Lighting Technology	LED
Flux measurement reference	Sphere
Light Technical	
Colour Code	840 [CCT of 4000K]
Beam angle (nom.)	120 degree(s)
Luminous Flux	770 lm
Luminous efficacy (rated) (nom.)	111 lm/W
Colour designation	Cool White (CW)
Correlated Colour Temperature	4000 K
Colour consistency	<6
Colour rendering index (CRI)	82
LLMF at end of nominal lifetime (nom.)	70 %
Flickering value (PstLM)	1
Stroboscopic effect	0.4
Photobiological safety according to EN 62471	RG1
Operating and Electrical	
Input frequency	50 to 60 Hz

Power Consumption	6.9 W
Lamp current (nom.)	38 mA
Starting time (nom.)	0.5 s
Warm-up time to 60% light	0.5 s
Power Factor (Fraction)	0.9
Voltage (nom.)	220-240 V
LED alternative to fluorescent lamp power	18 W
Inrush current at mains	2.78
Max. lamp no. on MCB B type 10A – Mains	264
Max. lamp no. on MCB B type 10A – EM ballast without Compensation Capacitor.	264
Max. lamp no. on MCB B type 10A – EM ballast with Compensation Capacitor.	-
Max. lamp no. on MCB B type 16A – Mains	422
Max. lamp no. on MCB B type 16A – EM ballast without Compensation Capacitor.	422
Max. lamp no. on MCB B type 16A – EM ballast with Compensation Capacitor.	-
Ballast Compatibility	EM/Mains

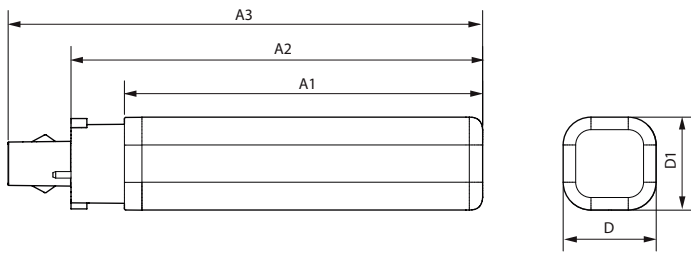
Temperature	
Ambient temperature range	-20 to +35 °C

CorePro LED PLC 2P

T-Case maximum (nom.)	75 °C
Controls and Dimming	
Dimmable	No
Mechanical and Housing	
Lamp Finish	Frosted
Bulb material	Plastic
Product length	100 mm
Bulb shape	PL-C
Approval and Application	
Energy Efficiency Class	E
Energy-saving product	Yes
Approval marks	RoHS compliance CE marking KEMA Keur certificate
Energy consumption kWh/1,000 hours	7 kWh
EPREL registration number	1820628

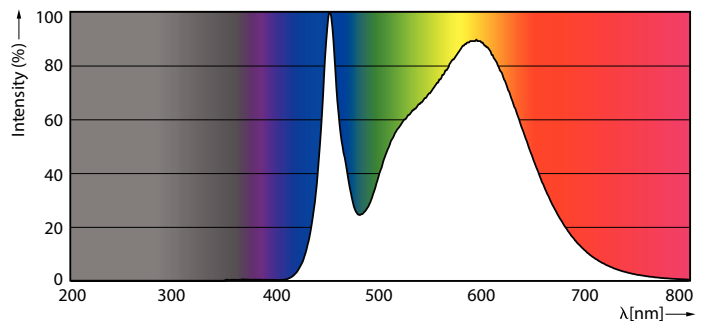
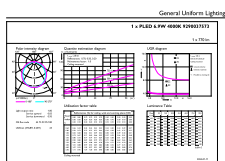
CE mark	Yes
EU RoHS compliant	Yes
Product Data	
Order product name	CorePro LED PLC 6.9W 840 2P G24d-2
Full product name	CorePro LED PLC 6.9W 840 2P G24d-2
Full EOC	872016928756300
Order code	28756300
Material no. (12 NC)	929003757302
Numerator – quantity per pack	1
Net Weight (Piece)	0.075 kg
EAN/UPC – Product/Case	8720169287563
Numerator – packs per outer box	10
EAN/UPC - Case	8720169287570

Dimensional drawing



Product	D1	D2	A1	A2	A3
CorePro LED PLC 6.9W 840 2P G24d-2	34 mm		129 mm	148 mm	171 mm

Photometric data

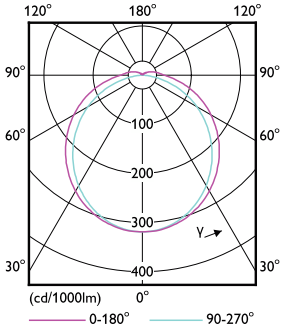


General uniform lighting - CorePro LED PLC 6.9W 840 2P G24d-2

Spectral Power Distribution Colour - CorePro LED PLC 6.9W 840 2P G24d-2

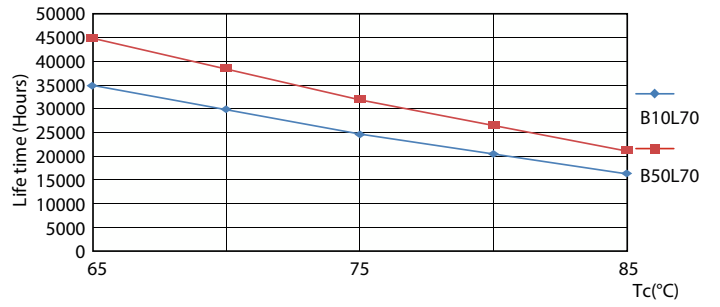
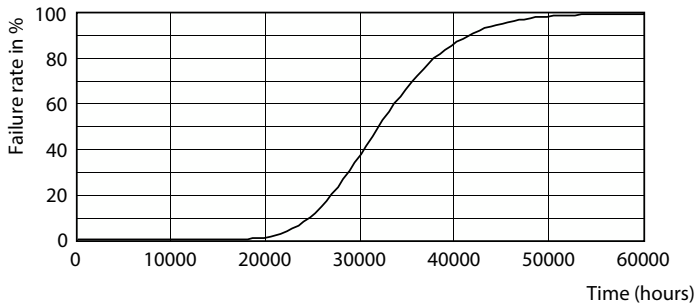
CorePro LED PLC 2P

Photometric data

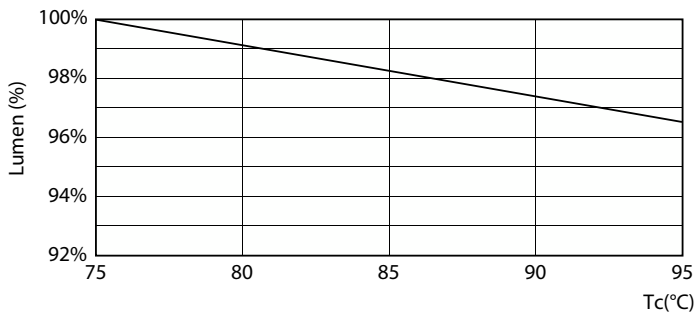


Light Distribution Diagram - CorePro LED PLC 6.9W 840 2P G24d-2

Lifetime

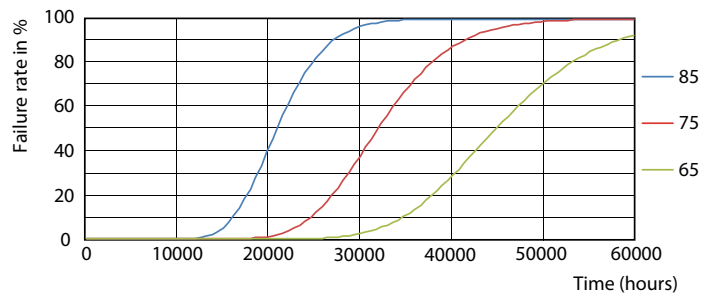


Life Expectancy Diagram



Lumen Maintenance Diagram - CorePro LED PLC 6.9W 840 2P G24d-2

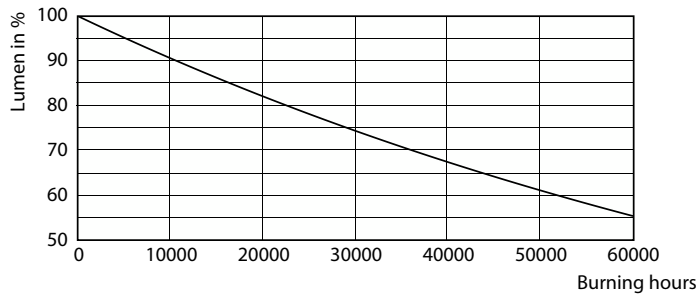
LifetimeVsTc



FailureRate

CorePro LED PLC 2P

Lifetime



Lumen Maintenance Diagram - CorePro LED PLC 6.9W 840 2P G24d-2

