



CorePro LED PLC 2P

LED PLC 8.9W 840 2P G24d-3

CorePro LED PLC 2P integrates a LED light source into a traditional fluorescent form factor. This product is the ideal solution for uplampping in general lighting applications: it meets basic lighting requirements, offers significant energy savings, and is environmentally friendly.

Product data

General Information	
Cap-Base	G24d-3
Nominal lifetime	30,000 hour(s)
Switching Cycle	50,000
Lighting Technology	LED
Light Technical	
Color Code	840 [CCT of 4000K]
Beam Angle (Nom)	120 degree(s)
Luminous Flux	1,100 lm
Luminous Efficacy (rated) (Nom)	123 lm/W
Color Designation	Cool White (CW)
Correlated Color Temperature (Nom)	4000 K
Color Consistency	<6
Color rendering index (CRI)	82
LLMF At End Of Nominal Lifetime (Nom)	70 %
Photobiological safety according to EN 62471	RG1
Operating and Electrical	
Input Frequency	50 to 60 Hz
Power Consumption	8.9 W
Lamp Current (Nom)	52 mA
Wattage Equivalent	26 W

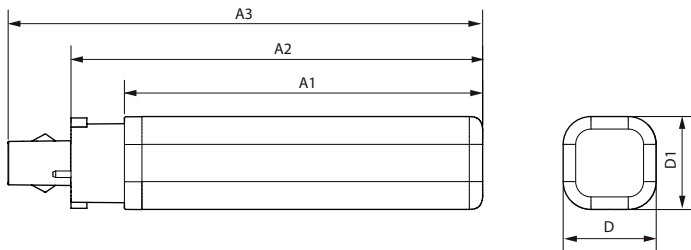
Starting Time (Nom)	0.5 s
Warm-up time to 60% light	0.5 s
Power Factor (Fraction)	0.9
Voltage (Nom)	220-240 V
Temperature	
Ambient temperature range	-20 to +35 °C
T-Case Maximum (Nom)	75 °C
Controls and Dimming	
Dimmable	No
Mechanical and Housing	
Bulb Finish	Frosted
Bulb Material	Plastic
Product Length	200 mm
Bulb Shape	PL-C
Approval and Application	
Energy Saving Product	Yes
Approval Marks	RoHS compliance CE marking KEMA Keur certificate
CE mark	Yes

CorePro LED PLC 2P

EU RoHS compliant	Yes
Product Data	
Order product name	LED PLC 8.9W 840 2P G24d-3
Full product name	LED PLC 8.9W 840 2P G24d-3
Full product code	872016929648000
Order code	929003757508
Material Nr. (12NC)	929003757508

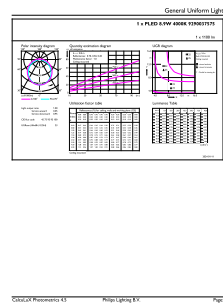
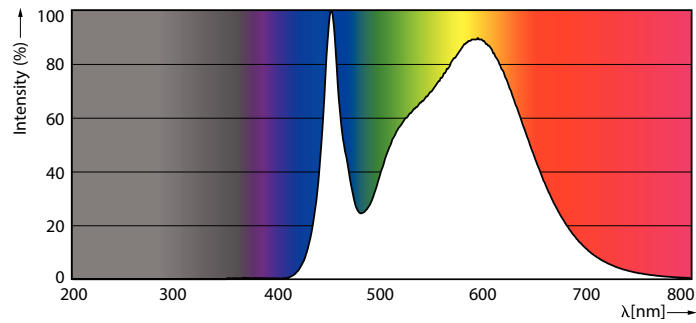
Numerator - Quantity Per Pack	1
Net Weight (Piece)	0.090 kg
EAN/UPC - Product/Case	8720169296480
Numerator - Packs per outer box	10
EAN/UPC - Case	8720169296497

Dimensional drawing



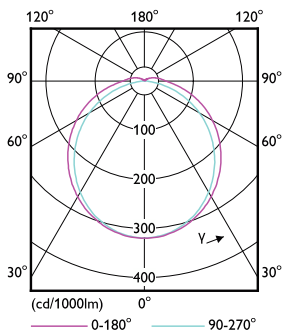
Product	D1	D	A1	A2	A3
LED PLC 8.9W 840 2P G24d-3	34 mm	34 mm	129 mm	148 mm	171 mm

Photometric data



Spectral Power Distribution Colour - LED PLC 8.9W 840 2P G24d-3

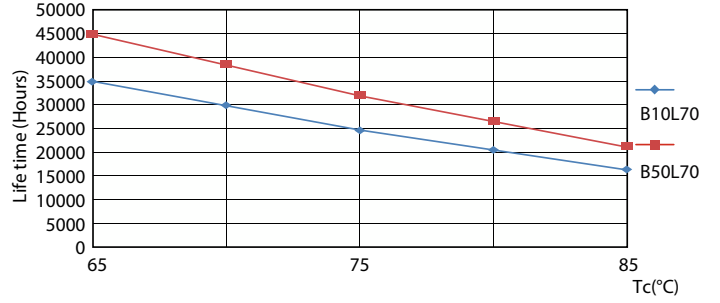
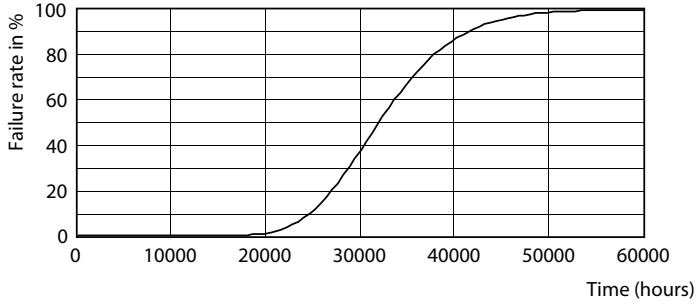
General uniform lighting - LED PLC 8.9W 840 2P G24d-3



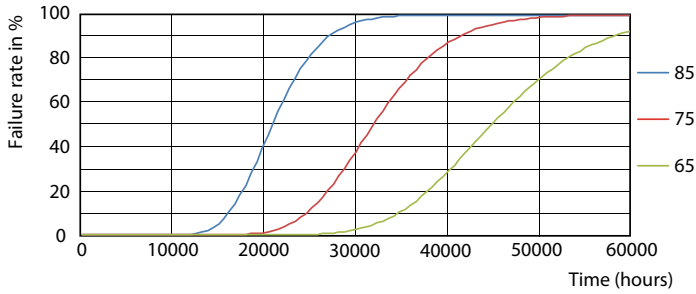
Light Distribution Diagram - LED PLC 8.9W 840 2P G24d-3

CorePro LED PLC 2P

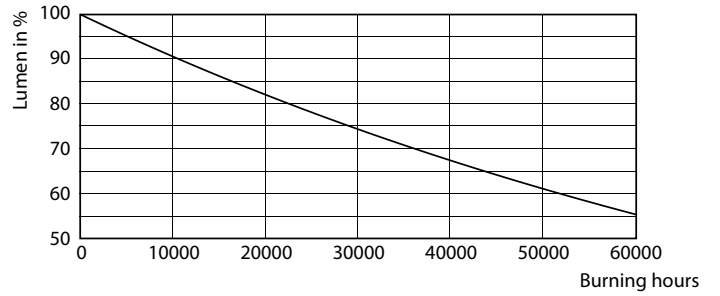
Lifetime



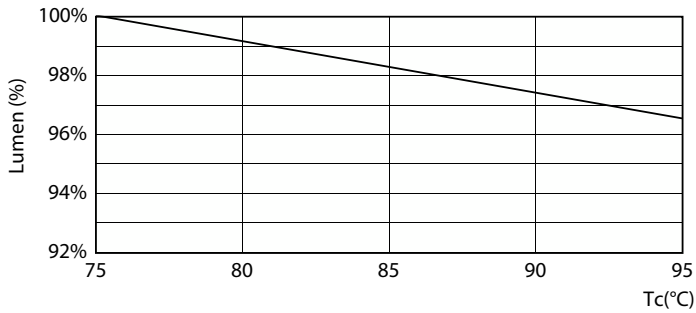
Life Expectancy Diagram



LifetimeVsTc



FailureRate



Lumen Maintenance Diagram - LED PLC 8.9W 840 2P G24d-3

Lumen Maintenance Diagram - LED PLC 8.9W 840 2P G24d-3

CorePro LED PLC 2P

